

# Artificial Intelligence

## IN EDUCATION

Research based on feedback from over 2,800  
Alberta K-12 teachers and school leaders.



### Alberta Teachers & School Leaders

→ 8 in 10

teachers have used artificial intelligence systems personally and professionally in the last year.

### Most Common Uses

#1

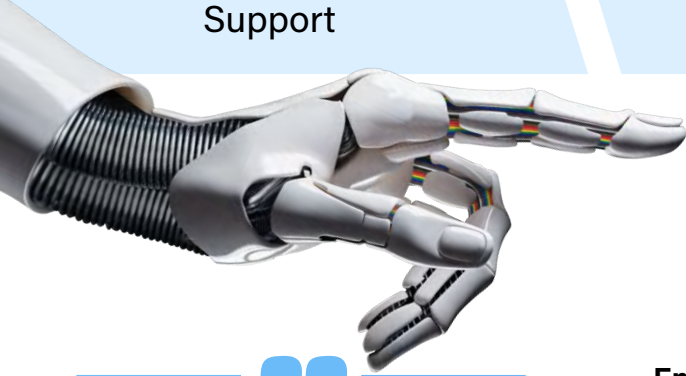
Writing & Editing  
Support

#2

Lesson  
Planning

#3

Generating Customized  
Learning Resources



1 in 2 →

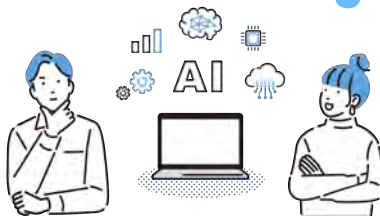
### Digital Divide

Alberta teachers are concerned that uneven access to AI technologies will widen the educational divide for their students.

### Emerging Questions ?



"I use AI to change the reading level of articles to fit the diverse abilities of my students."

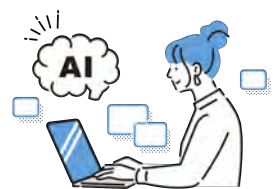


#### Moral Passivity

Will AI diminish human ethical and moral decision making?

#### Cognitive Atrophy

Will AI erode human creativity and critical thinking skills?



"Plagiarism is a major problem!"



The Alberta Teachers' Association

#### Learn More

Contact Dr. Philip McRae  
Alberta Teachers' Association  
Email: [research@ata.ab.ca](mailto:research@ata.ab.ca)

SCAN QR CODE  
to read the full 2025  
ATA Research Report



\*Margin of Error +/- 2.5%(19 times out of 20)